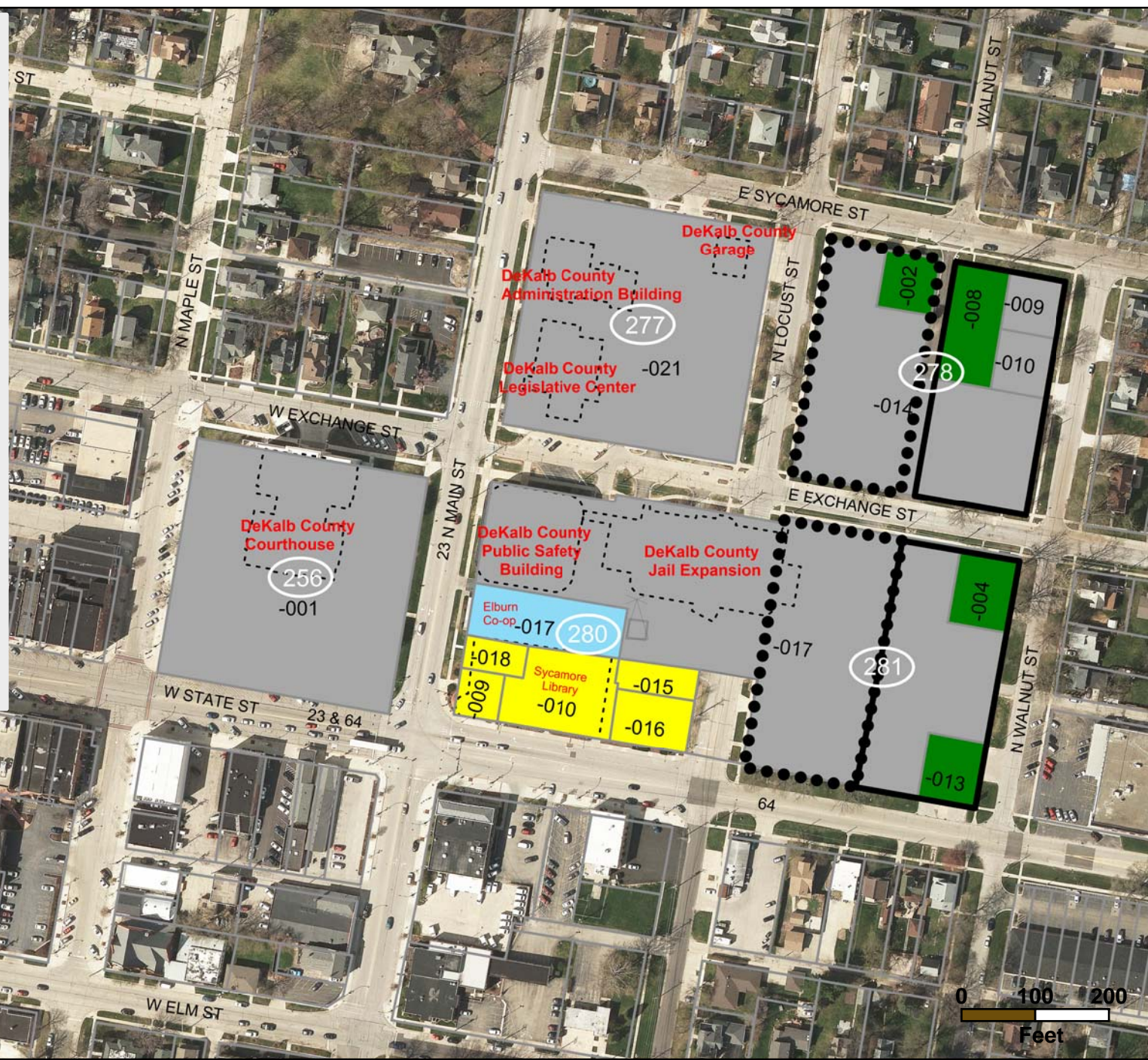


# County Purchases in Growth Areas

Parcel	Date Acquired	Price
<b>50 year Growth Area</b>		
06-32-281-002	09-29-2000	\$95,000
06-32-278-007	12-22-2000	\$90,000
06-32-281-005	01-08-2001	\$135,000
06-32-278-004	02-02-2001	\$96,000
06-32-278-001	05-21-2001	\$88,818
06-32-278-003	05-21-2001	\$59,251
06-32-281-001	09-07-2001	\$90,000
06-32-278-005	11-13-2002	\$99,711
06-32-281-008	02-04-2004	\$126,175
06-32-281-006	10-20-2008	\$400,000
06-32-281-007	10-20-2008	
06-32-278-006	11-09-2009	\$175,000

<b>100 year Growth Area</b>		
06-32-278-009	01-15-2002	\$116,550
06-32-278-011	09-29-2003	\$126,050
06-32-281-009	07-08-2005	\$119,700
06-32-281-010	09-30-2005	\$145,000
06-32-281-012	01-30-2009	\$105,600
06-32-281-003	06-25-2009	\$493,756
06-32-281-011	06-25-2009	
06-32-278-012	12-03-2012	\$163,000
06-32-278-010	03-22-2018	\$125,000



DeKalb County Government  
 Information Management Office  
 200 N Main St  
 Sycamore, IL 60178

Updated: March 22, 2018 BH  
 Printed: March 22, 2018  
 Aerials: Spring 2015

## DeKalb County Government Sycamore Campus - 2011 Plan for Future Growth Sycamore Township (06) Section (32)

**Legend**

- County Owned Property
- 50 Year Growth
- 100 Year Growth
- Sycamore Library Property
- Elburn co-op Property
- Tower