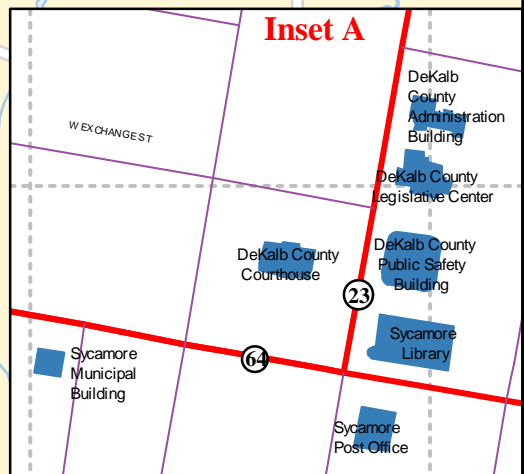
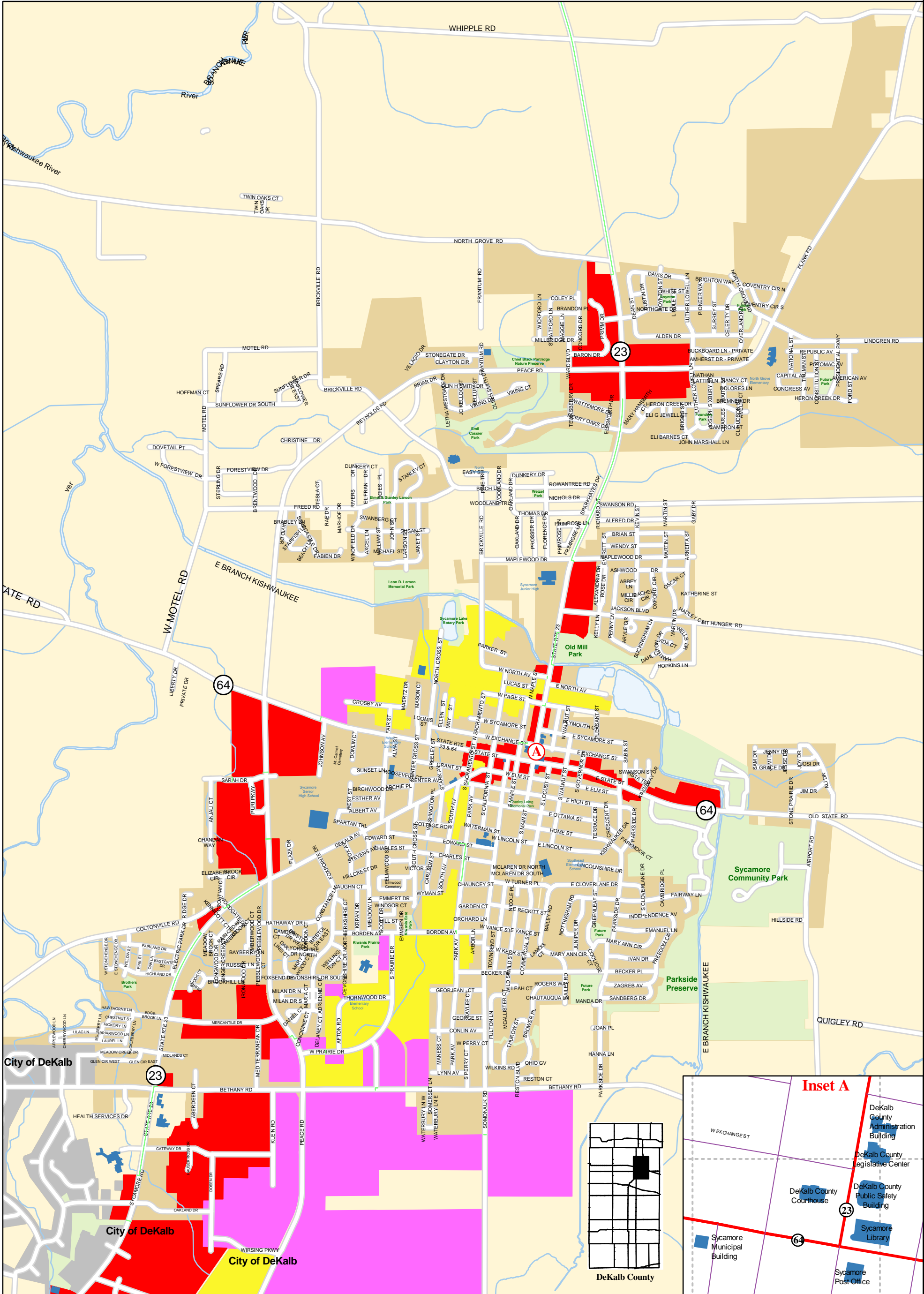


C-2-B4-A-6 4-B-1 4-B-2 4-B-3 4-B-4 4-B-5 4-B-6 4-C-1 4-C-2 4-C-3 4-C-4 4-C-5 4-C-6 5-A-1 5-A-2 5-A-3 5-A-4 5-A-5 5-A-6 5-B-1 5-B-2 5-B-3 5-B-4 5-B

C-2-C
 C-2-D
 C-2-E
 C-2-F
 C-3-A
 C-3-B
 C-3-C
 C-3-D
 C-3-E
 C-3-F
 D-1-A
 D-1-B
 D-1-C
 D-1-D
 D-1-E
 D-1-F
 D-2-A
 D-2-B
 D-2-C
 D-2-D
 D-2-E
 D-2-F
 D-3-A
 D-3-B
 D-3-C
 D-3-D
 D-3-E
 D-3-F
 E-1-A
 E-1-B
 E-1-C
 E-1-D
 E-1-E



DeKalb County Government
 Information Management Office
 200 North Main Street
 Sycamore, IL 60178
 815-895-1643

City of Sycamore - Enterprise Zones

Potential Uses of Eligible Enterprise Zone Areas

- Commercial
- Existing Industrial
- Available Industrial
- Connecting Strip

Enterprise Zone Approved for January 1, 2016

DeKalb County Enterprise Zone - 13,14419 sq mi
 City of Sycamore Enterprise Zone - 2,30119 sq mi

** Area calculated using our GIS base data and not a true survey.

Created: November 2014 BH
 Printed: March 2017

