

**DEKALB COUNTY HIGHWAY DEPARTMENT**

**SHOULDERING MACHINE SPECIFICATIONS**

Sealed proposals for the purchase of One (1) New Shouldering Machine will be received by the Highway Committee of the DeKalb County Board until 10:00 AM Wednesday, April 4<sup>th</sup>, 2018 at the office of the County Engineer, 1826 Barber Greene Rd. DeKalb, Illinois, 60115 and at that time publicly opened and read.

An authorized dealer may submit a bid for one (1) or more models that are equal to or exceed the following specifications. The Shouldering Machine to be furnished shall be new. A used or demonstrator model will not be considered. A copy of the specifications and literature for each model submitted shall be included with each bid. Only bids from authorized dealers will be considered. Each bidder should state warranty coverage and estimated date of delivery with bid. The dealer shall submit a bid for furnishing a shouldering machine as per specifications.

The County Board reserves the right to reject any and all bids and to waive any technicalities.

The submitted bids shall not include tax, from which we are exempt.

One (1) 1996 HTC Model 2000 Shouldering Machine will be traded in. The trade-in machine will be available for inspection at the Highway Department Garage by appointment only, by calling 815-756-9513.

Total Cost One (1) New Shouldering Machine \_\_\_\_\_

Trade allowance One (1) 1996 HTC 2000 \_\_\_\_\_

Net cost One (1) New Shouldering Machine \_\_\_\_\_

Proposal Submitted by:

Name \_\_\_\_\_

Address \_\_\_\_\_

\_\_\_\_\_

Signature \_\_\_\_\_

## **SHOULDERING MACHINE SPECIFICATIONS**

**FRAME:** Shall be welded tubular, formed combination construction, not less than 2800#, with 1.5 cubic yard hopper capacity. Overall width 123", height 42", length 65". Truck clearance on front of hopper 26" high. Hand adjustable flow gate, or for large materials, endplate may be removed for unrestricted flow. Standard color shall be CAT yellow.

**CONVEYOR:** Two hydraulic motors, driving two 6" diameter, greaseable, lagged pulleys, ten 4" idler pulleys. All idler pulleys shall be equipped with greaseless bearings and have C-Section, V-Groove in the center.

**BELT:** Heat and oil resistant. 18" wide, 2-ply, 220# per inch tensile strength, 3/16" top cover, 1/16" bottom cover, with C-Section, V-Belt molded in the center. Shall resist heat to 350 degrees Fahrenheit.

**MOTORS:** Two 14 cubic inch displacement hydraulic motors.

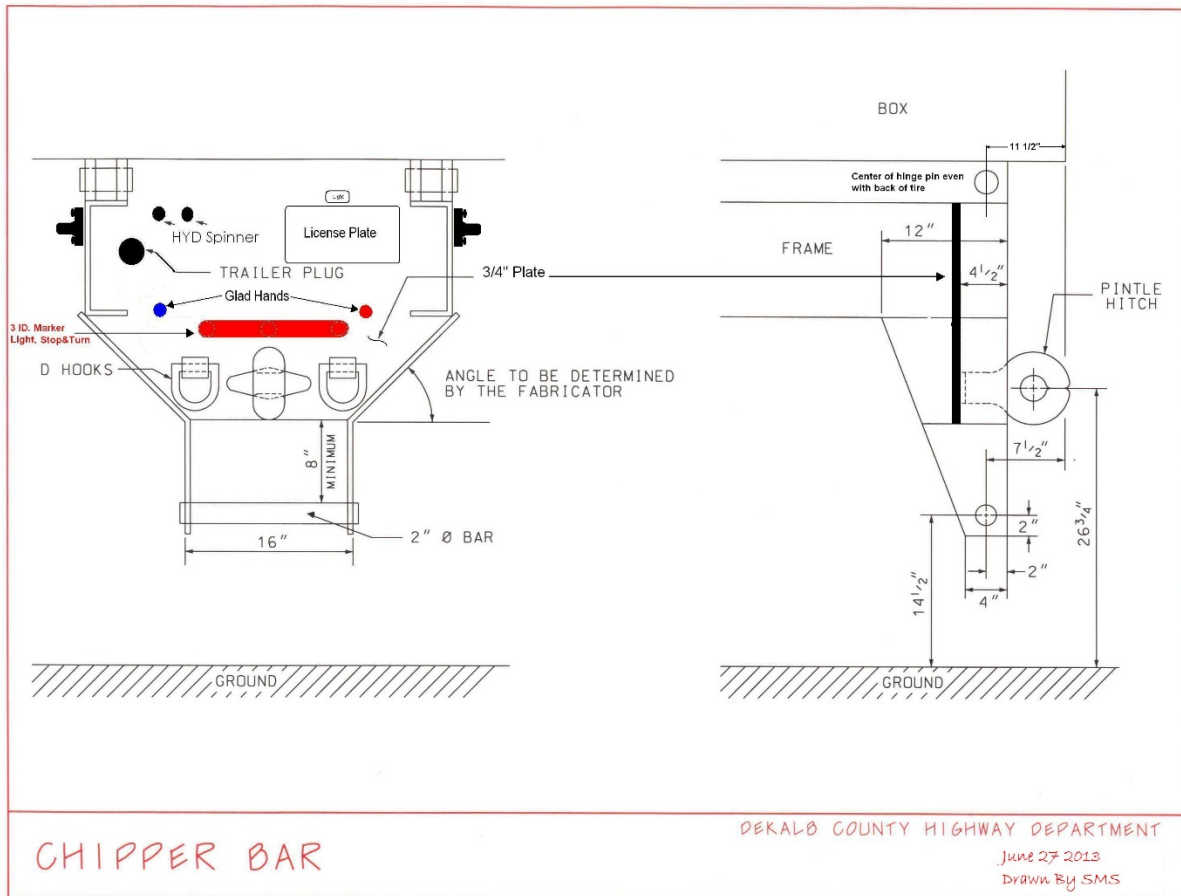
**HYDRAULIC DOOR:** Hydraulic motor directly coupled to a shaft with a spur gear attached. The spur gear drives the rack on the door. Electric control of the hydraulics to run the motor.

**WHEELS:** Four heavy-duty swivel casters with dual 8" diameter, 3" wide cast iron wheels with polyurethane molded to them.

**HOOK-UP:** Unit shall be equipped with an ACS Pro-series 2000 compatible coupling system mount to match the County's current loader attachments for ease of hook-up and for use with our other current attachments.

**OPERATOR PLATFORM:** A detachable platform with safety rails and chain for operator protection. Mounts on the right side of the conveyor, forward of the belt or mounts to the wing.

- Unit shall be equipped with an **Etnyre Style Hitch** with a hydraulic cylinder for grasping and releasing the grab (chipper) bar on the truck with electric over hydraulic control. **See drawing below for height requirements and dimensions for installation of Etnyre Style Hitch. Height requirements and dimensions to match current DeKalb County Fleet for grasping and releasing the grab (chipper) bar. Please call with any questions or for more measurements before installing Etnyre Style Hitch on unit.**



## WING SPECIFICATIONS

- Unit shall be equipped with a fully hydraulic strike-off wing that adjusts height, slope, and width by using the electrically operated control. The strike-off wing shall be capable of providing a spread from two to six feet, and from five inches below grade to five inches above grade.
- All cylinders shall have ball checks to eliminate unwanted movement of the wing
- All ports in the valve, motors, and cylinders shall be o-ring to eliminate leakage
- Unit shall have replaceable cutting edges on all sections

## OTHER UNIT SPECIFICATIONS

- Unit shall be equipped with a control system with a 25' long pendant that will allow one person to electronically control the unit from inside the cab of the push vehicle or anywhere within 25' of the conveyor unit.
- Unit shall be equipped with a **Priority Divider Valve Kit** to allow only 20 GPM of oil to hydraulic valve on cross conveyor and directs the overflow oil back to return on loader.
- Unit shall be equipped with the **Optional Valve Manifold** system that features electromagnetic hydraulic actuation for load sensing on all functions to maximize horsepower, incorporated power boost feature capable of being used with open or closed hydraulic systems. Valve Manifold system shall include an oversized oil cooler to provide optimal oil cooling and increased pump life.

**Please list any exceptions to the specifications below:**