

DEKALB COUNTY PERRY ROAD IMPROVEMENTS CH 7, FAS ROUTE 176 DEKALB COUNTY, ILLINOIS SECTION NO: 15-00249-00-RS FUNDING SOURCE: MFT & LOCAL 2016



REVISIONS:	DATE	2/25/2016
	REVISION	ORIGINAL RELEASE

DRAWN BY:
KRF
DRAWING NAME:
.dwg



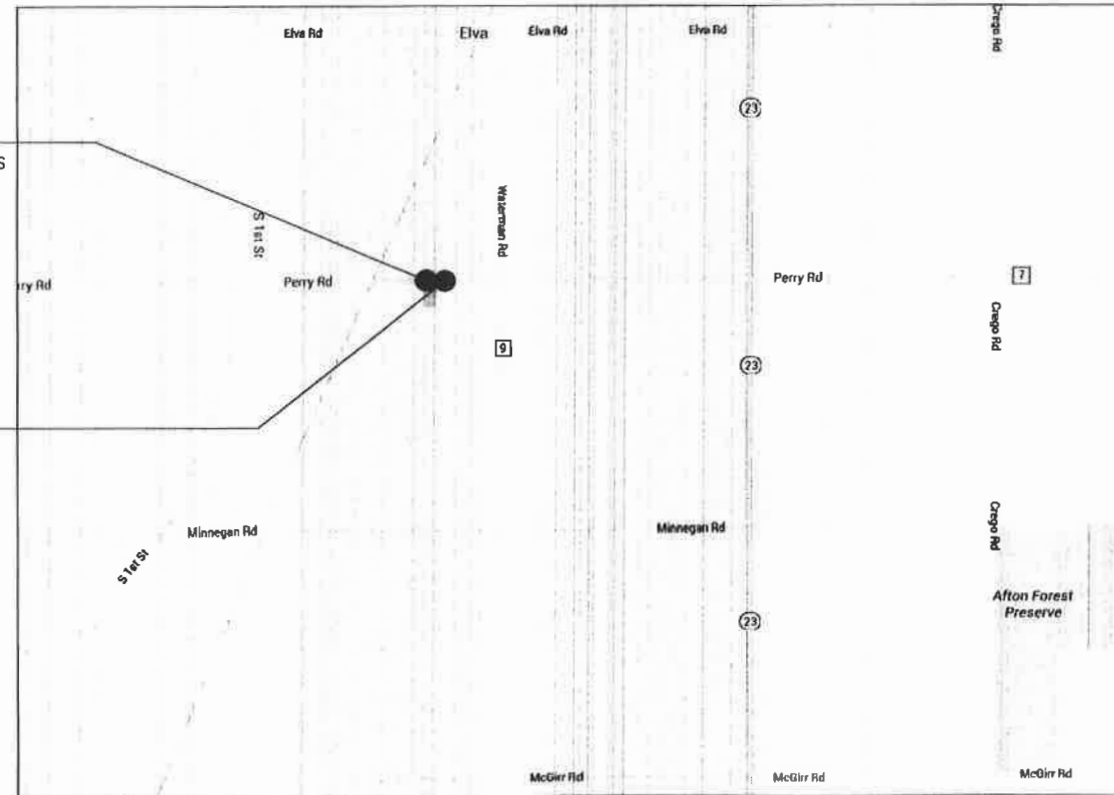
PERRY ROAD
& ENTRANCE REPLACEMENT
FOR
DEKALB COUNTY

INDEX OF SHEETS:

SHEET NO.	DESCRIPTION
1	COVER SHEET
2	PLAN / SCHEDULE OF QTY'S / TYPICALS
3	CROSS SECTIONS STA 0+00 - 2+50
4	CROSS SECTIONS STA 3+00 - 6+00

PERRY ROAD
IMPROVEMENT BEGINS
STATION 0+50

PERRY ROAD
IMPROVEMENT ENDS
STATION 6+50



LOCATION MAP
SCALE: N.T.S.

STANDARDS:

701201	LANE CLOSURE, 2L, 2W, DAY ONLY
701301	LANE CLOSURE, 2L, 2W, SHORT TIME OPERATIONS
701306	LANE CLOSURE, 2L, 2W, SLOW MOVING OPERATIONS
701901	TRAFFIC CONTROL DEVICES

LENGTH OF IMPROVEMENT
PLANK ROAD = 600 FT (0.1136 MILES) GROSS
PLANK ROAD = 600 FT (0.1136 MILES) NET



PLANS PREPARED BY:
DEKALB COUNTY HIGHWAY DEPARTMENT



NATHAN F. SCHWARTZ
DEKALB, ILLINOIS
ILLINOIS LICENSED PROFESSIONAL
ENGINEER NO. 062-056001
EXPIRES: 11/30/2017

TRAFFIC DATA:
2013 ADT: 1,750
2033 ADT: 2,600
POSTED SPEED LIMIT: 55 MPH
DESIGN DESIGNATION: MAJOR COLLECTOR

DEKALB COUNTY HIGHWAY DEPARTMENT
ENGINEERING DEPARTMENT

APPROVED: March 22 2016
Nathan F. Schwartz
DEKALB COUNTY ENGINEER

PASSED: 3/22/16
[Signature]
DISTRICT 3 LOCAL ROADS & STREETS ENGINEER

RELEASING FOR
BID BASED ON
LIMITED REVIEW

3/22/16
[Signature]
DEPUTY CHIEF OF HIGHWAYS REGION 2 ENGINEER

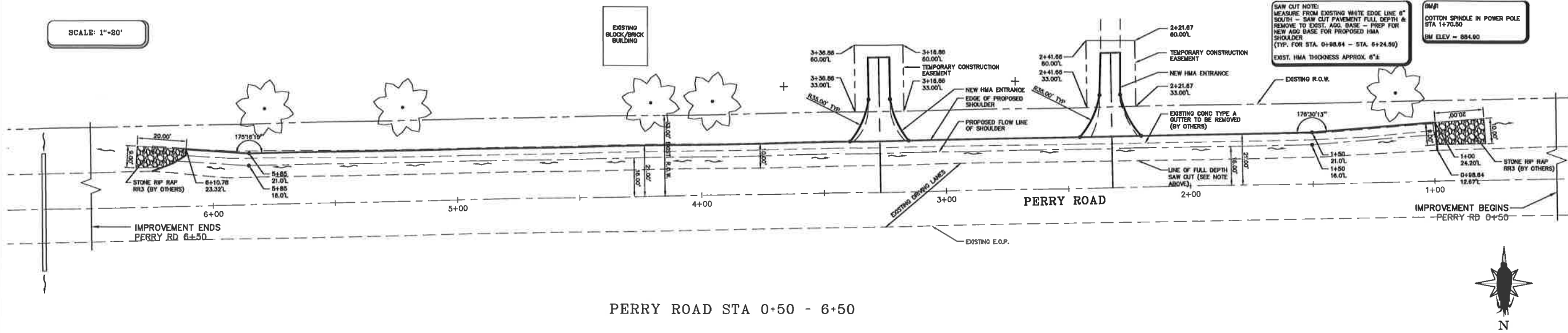
SHEET TITLE:
COVER SHEET

SECTION:
15-00249-00-RS

DATE:
2/25/2016

SHEET NO.
1 of 4

SCALE: 1"=20'



PERRY ROAD STA 0+50 - 6+50



REVISIONS:	DATE:
REVISION:	2/25/2016
ORIGINAL RELEASE	

DRAWN BY: KRF
DRAWING NAME: .dwg



PERRY ROAD
 SHOULDER & ENTRANCE REPLACEMENT
 FOR
 DEKALB COUNTY

SHEET TITLE:
 PLAN / SCHEDULE OF QTY'S / TYPICAL SECTIONS

SECTION:
 15-00249-00-RS

DATE:
 2/25/2016

SHEET NO.
 2 of 4

SUMMARY OF QUANTITIES

ITEM:	UNIT:	QTY:
SEEDING CLASS 2A	ACRE	0.14**
FURNISHED EXCAVATION	CU YD	67.0**
AGGREGATE BASE COURSE, TYPE B	TON	407.0**
HOT-MIX ASPHALT SURFACE COURSE, MIX "C" N50 FG	TON	151.0
BITUMINOUS MATERIALS (TACK COAT)	LB	150.0
CONCRETE REMOVAL	SQ YD	174.0**
STONE RIP RAP RR3	SQ YD	38.0**
SAW CUT	FOOT	526.0**
FULL DEPTH PAVEMENT REMOVAL	SQ YD	585.0**
TRAFFIC CONTROL & PROTECTION (SPECIAL)	L. SUM	1.0

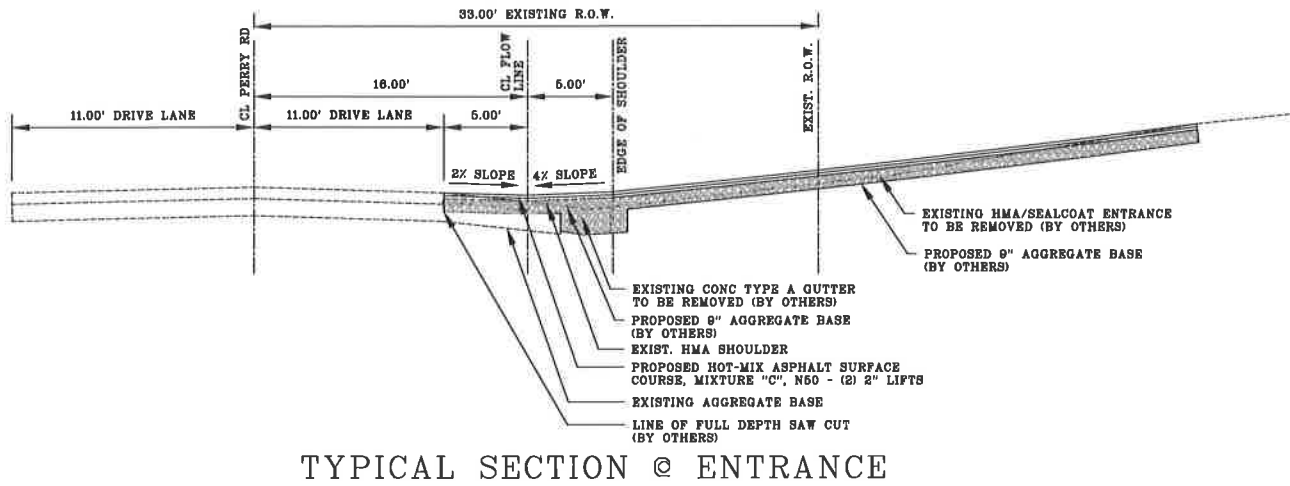
** DESIGNATES QTY "BY OTHERS"

HOT MIX ASPHALT MIXTURE REQUIREMENTS

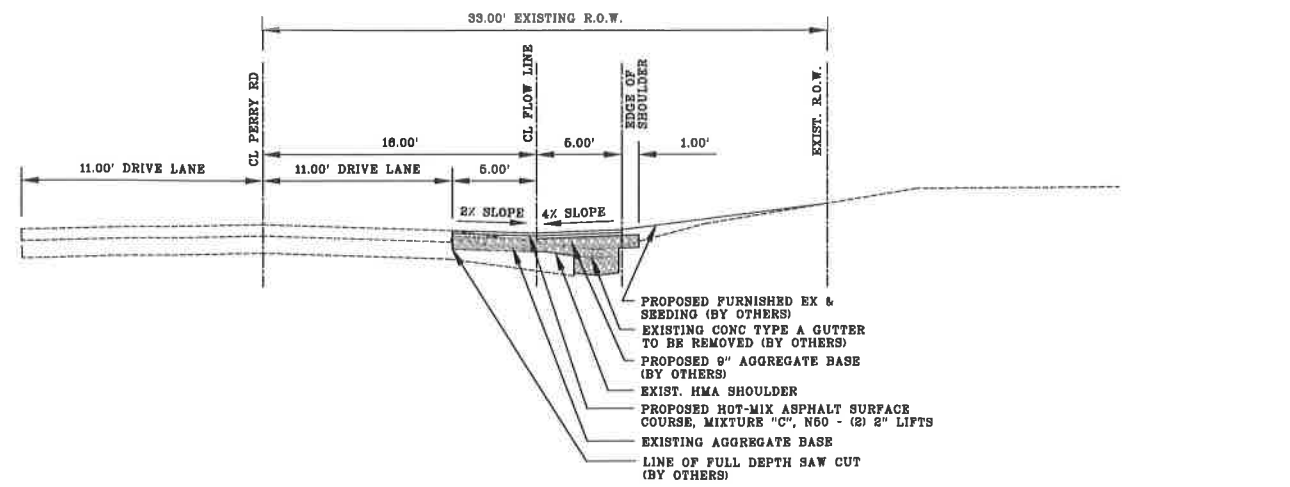
	HMA SURFACE
PG GRADE	PG 64-22
DESIGN AIR VOIDS	4.0% @ N50
MIXTURE COMPOSITION	IL 9.5 FG
FRICTION AGGREGATE	MIXTURE C
DENSITY TEST METHOD	LR 1030
MIXTURE WEIGHT	112# / SQ. YD. / IN
QUALITY MANAGEMENT PROGRAM	QC/QA
SUBLOT SIZE	N/A
LOCATIONS	ENTIRE PROJECT

GENERAL NOTES:

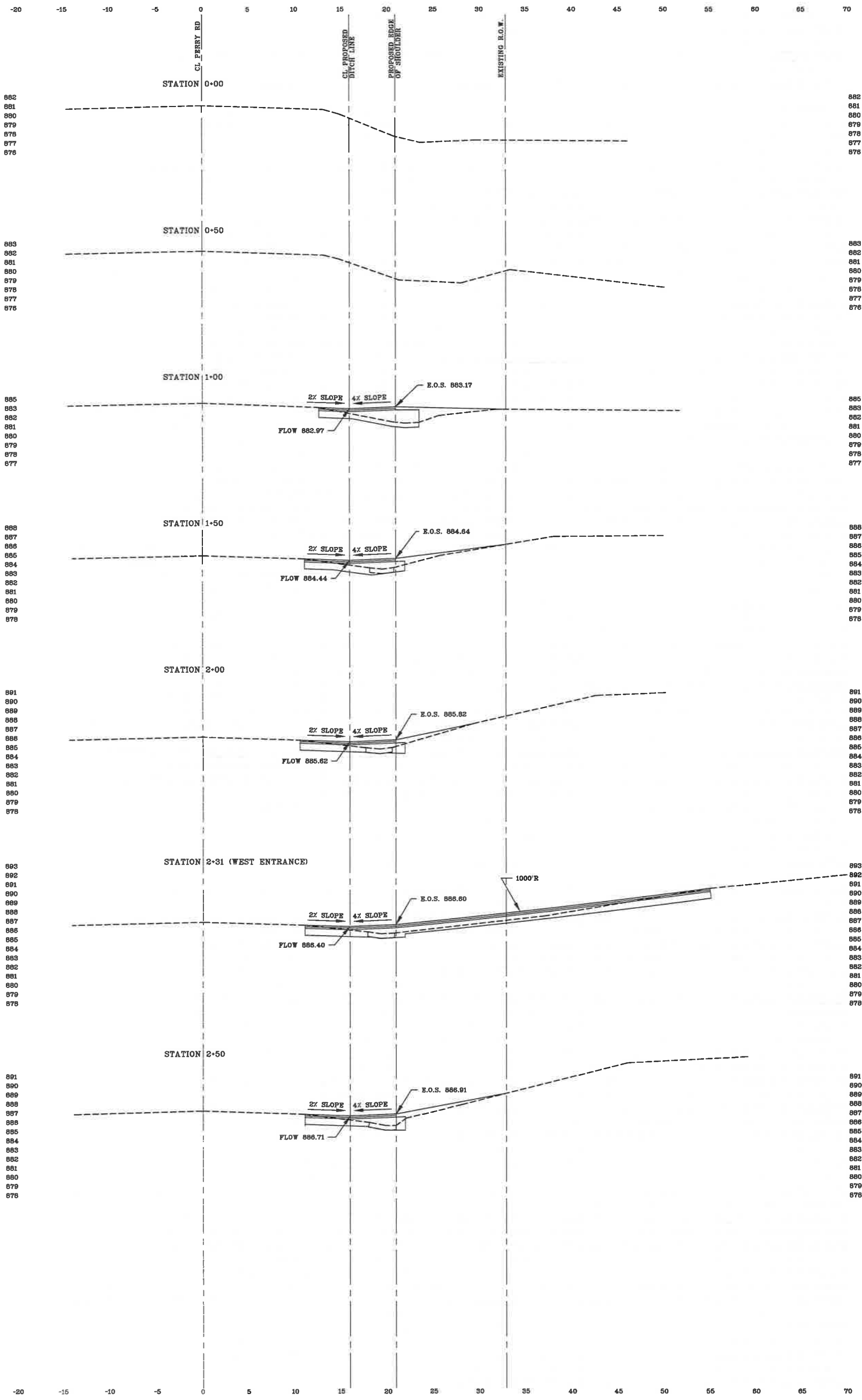
BITUMINOUS MATERIALS (TACK COAT) APPLICATION RATE = 0.05 LB / SQ FT



TYPICAL SECTION @ ENTRANCE



TYPICAL SECTION



3 OF 4
 SHEET NO.
 DATE: 2/25/2016
 SECTION: 15-00249-00-RS
 CROSS SECTIONS STATION 0+00 - STATION 2+50
 SHEET TITLE:

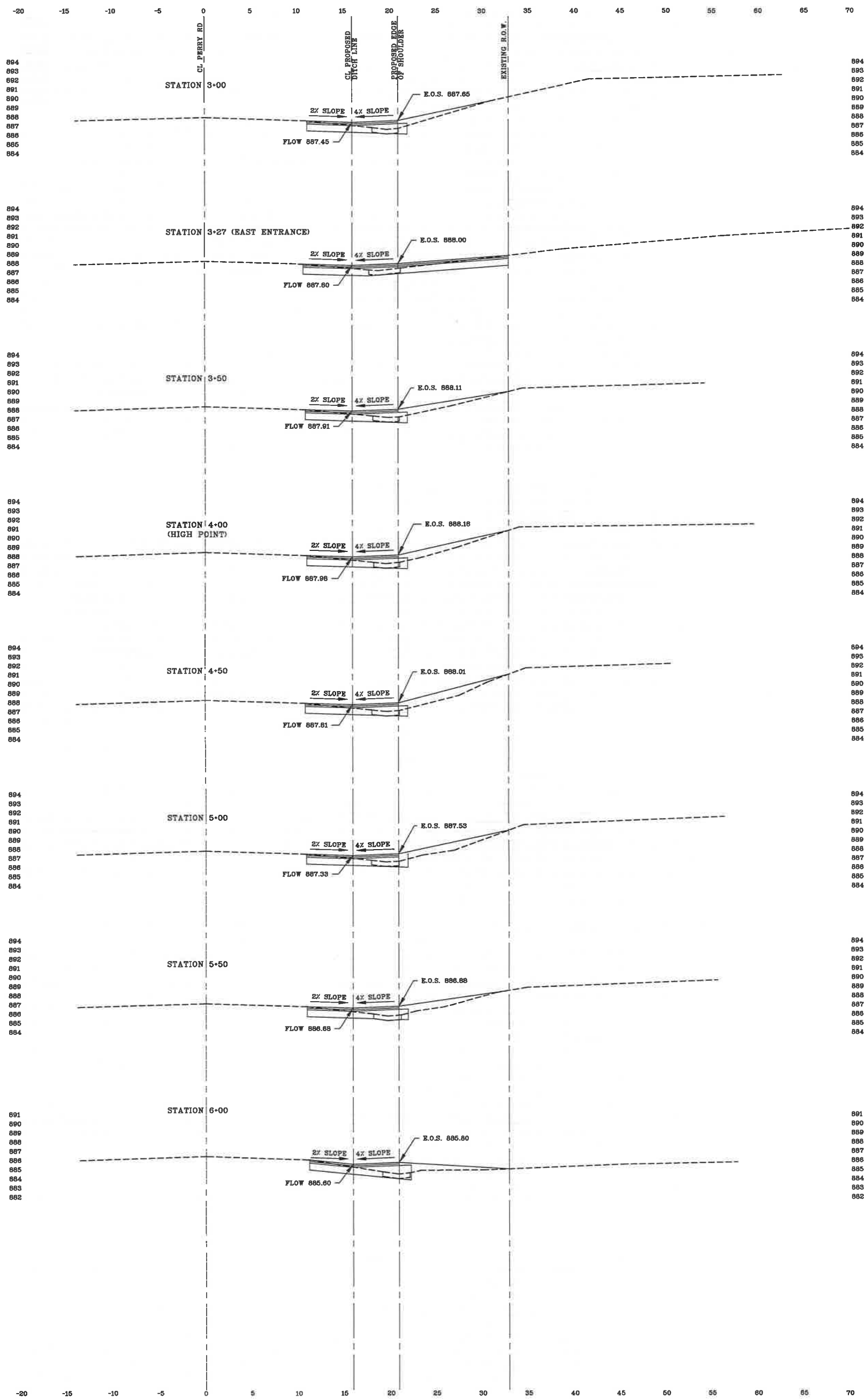
PERRY ROAD
 SHOULDER & ENTRANCE REPLACEMENT
 FOR
 DEKALB COUNTY



DRAWN BY: JRF
 DRAWING NAME:

REVISIONS:	
REVISION:	DATE:
ORIGINAL RELEASE	2/25/2016





SECTION:
15-00249-00-RS
DATE:
2/25/2016
SHEET NO.
4 OF 4

CROSS
SECTIONS
STATION 3+00
-
STATION
6+00
SHEET TITLE:

PERRY ROAD
SHOULDER & ENTRANCE REPLACEMENT
FOR
DEKALB COUNTY



DRAWN BY:
JBF
DRAWING NAME:
15-00249-00-RS.dwg

REVISIONS:	
REVISION:	DATE:
ORIGINAL RELEASE	2/25/2016

