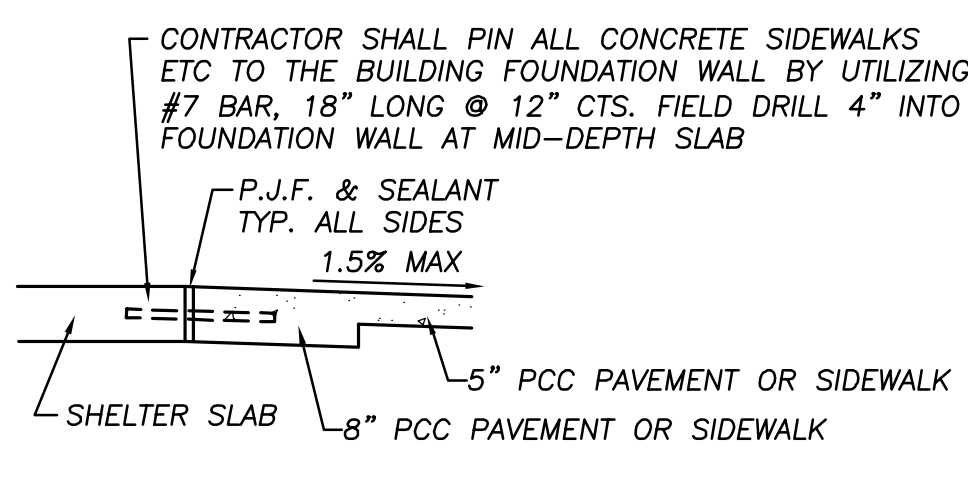
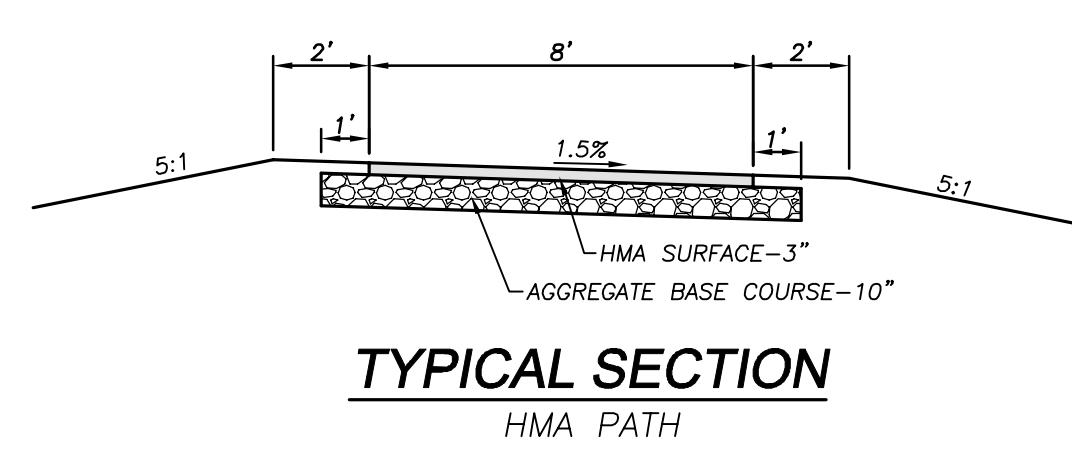


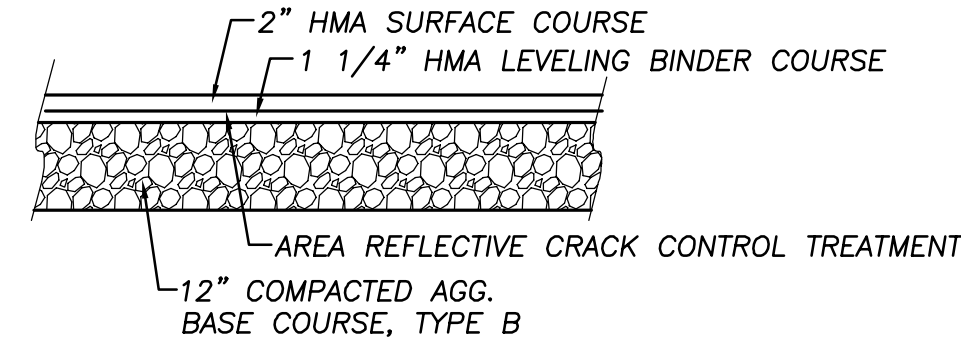
**SIDEWALK DETAIL**



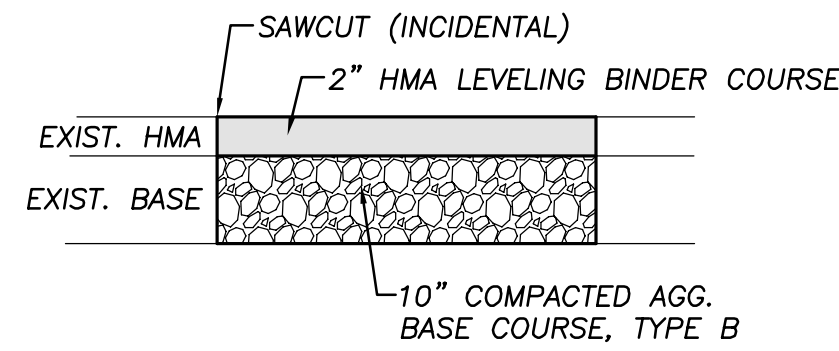
**PCC CONNECTION AT SHELTER**



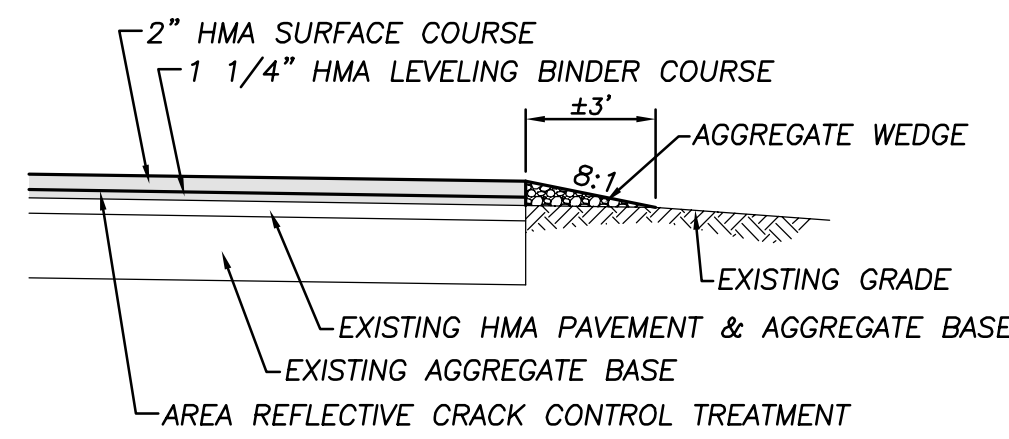
**TYPICAL SECTION  
HMA PATH**



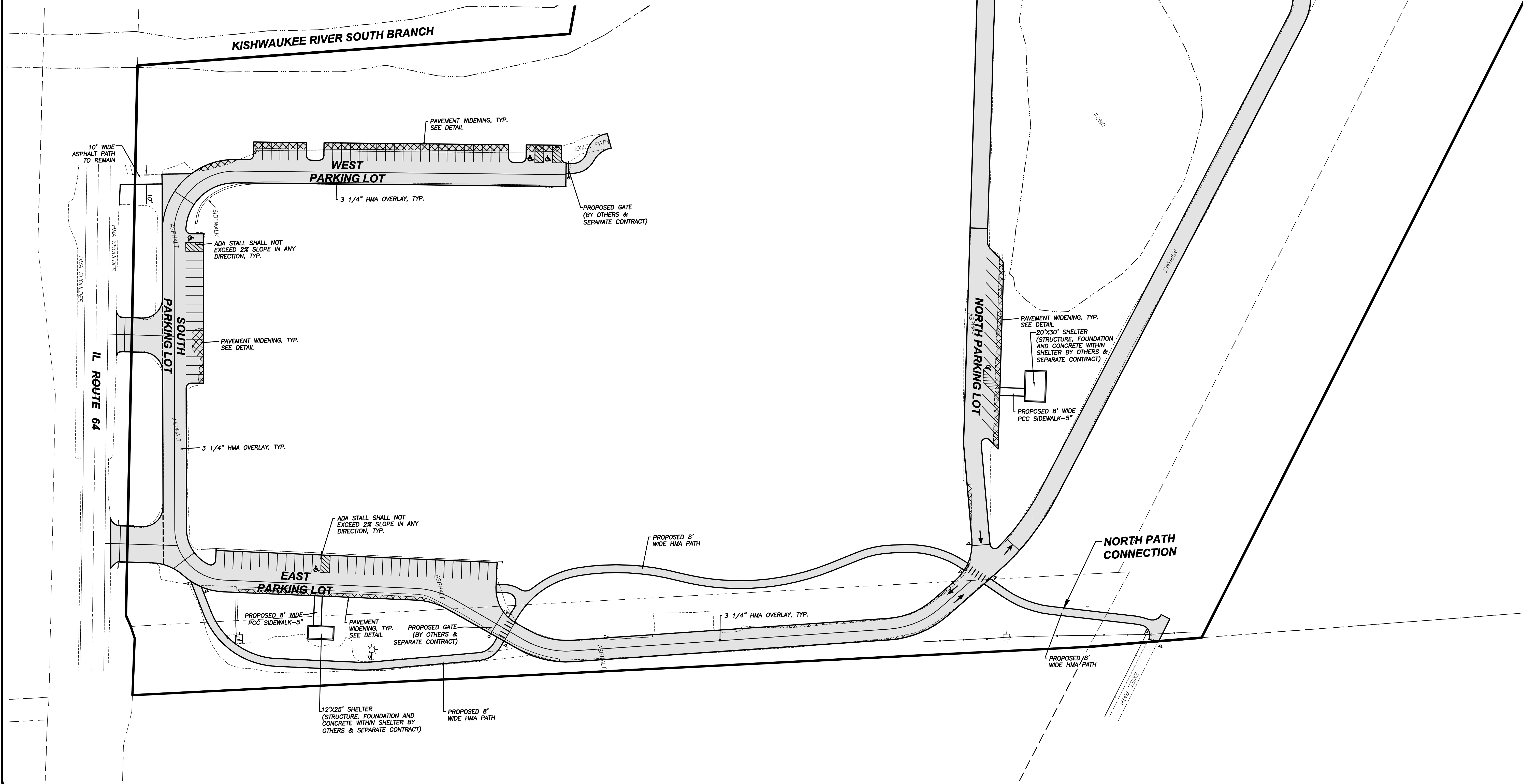
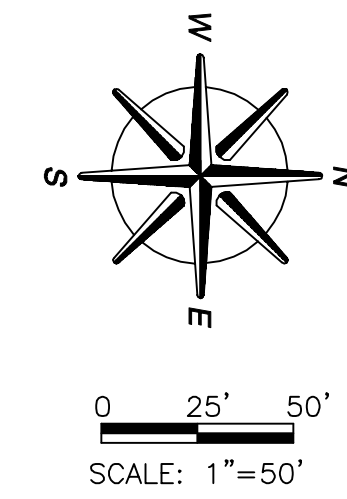
**PAVEMENT WIDENING DETAIL**



**PAVEMENT PATCHING DETAIL**  
LOCATIONS & SIZES OF PATCHES TO BE DETERMINED AT TIME OF CONSTRUCTION. QUANTITIES SHOWN ARE ASSUMED.



**TYPICAL SECTION  
PARKING & DRIVE AISLES**



REVISIONS	DATE

DESIGNED BY:	SAB
DRAWN BY:	ELCS
SUBMITTED BY:	
BOOK NO.:	

**wendler**  
 wendler engineering services, inc.  
 engineers - surveyors - scientists  
 www.wendlergs.com ph: 815.288.2281  
 Illinois Professional Design Firm No. 184-000848

**PROPOSED SITE IMPROVEMENTS  
 OF  
 SYCAMORE FOREST PRESERVE (EVERGREEN VILLAGE)  
 FOR  
 DEKALB COUNTY FOREST PRESERVE DISTRICT**

SHEET TITLE	<b>PAVEMENT PLAN</b>
-------------	----------------------

JOB NUMBER	2160123
------------	---------

DATE	08/01/2016
------	------------

SHEET NO.	<b>5 of 9</b>
-----------	---------------